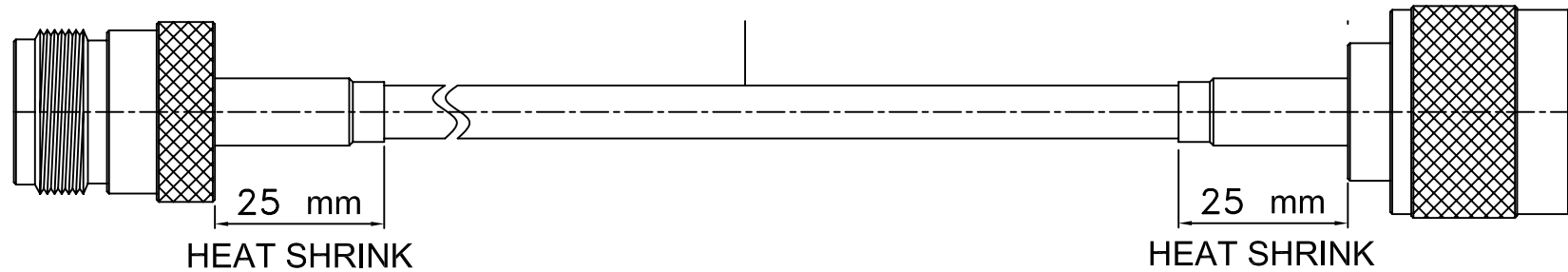


REV	DESCRIPTION	DRAWN	DATE



**N FEMALE**

**N MALE**

UNLESS OTHERWISE SPECIFIED					* MAJOR DIMENSION				APPROVED		TITLE						
3	N-13-01-F2-TGN	1	BRASS	NICKEL	1.REMOVE ALL BURRS. 2.BREAK ALL CONNERS & EDGES CO.15 MAX. 3.CHAMFER 1ST & LAST THREADS 45°. 4.DIAMETERS ON COMMON CENTERS. TO BE CONCENTRIC WITHIN 0.1 T.I.R. 5.ALL DIMENSIONS ARE AFTER PLATING.	UNLESS OTHERWISE NOTED TOLERANCES 0.5-6=±0.2 6-30=±0.4 30-120=±0.6 120-315=±1.0 ANGLES=±1°				CHECKED  DRAWN andrew		N MALE+CLF200+N FEMALE					
2	CABLE: CLF200	1										DRAWING NO.		REV A			
1	N-14-21-F2-TGN	1	BRASS	NICKEL								13012001421-1M					
NO	Description	Q'ty	Material	Finish						SCALE	3/1	UNIT	MM	DRAWN DATE	03/07/15	FILE NO.	